

TECHNOLOGICAL CONTAINER / MINI



Maximum use inside minimum packaging

The "MINI" technological container is the ideal solution for all areas lacking the required space, such as small roofs and shared locations. This well designed structure fits into those small spaces and in spite of its tiny size it perfectly complies with the required maximum serviceability.

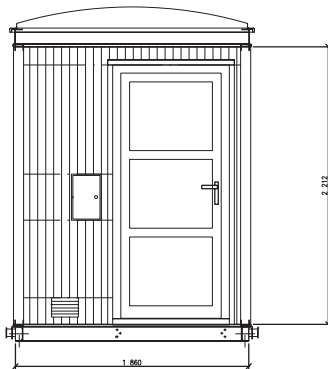
The container is built from zinc-coated segments and construction elements that enable the parts to be assembled in the workshop and, if required, to finish the fitting of the subassembly at the place of installation. With the exception of the roof bolts all the bolted connections are covered under the sheathings thus being inaccessible to any forcible handling by intruders.

**The container is fixed to a zinc-coated frame.
The container is not designed to support an antenna mast.**

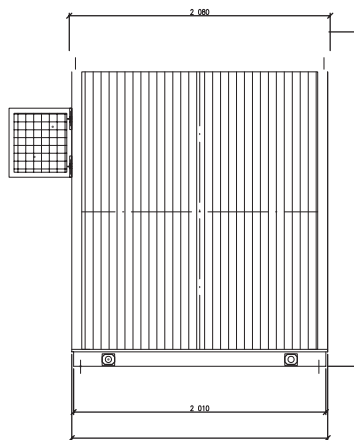


TECHNOLOGICAL CONTAINER MINI – 1,7x1,85 m

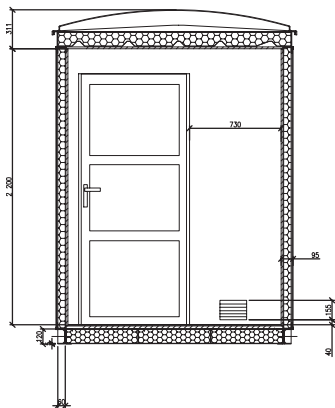
VIEW



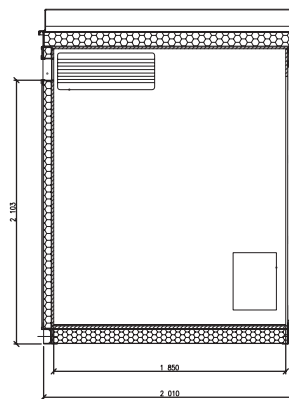
SIDE VIEW



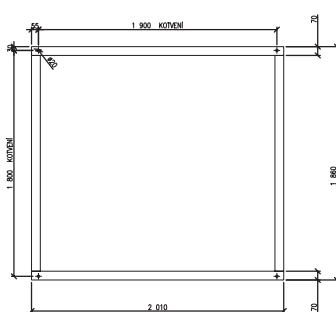
CROSS-SECTION A-A



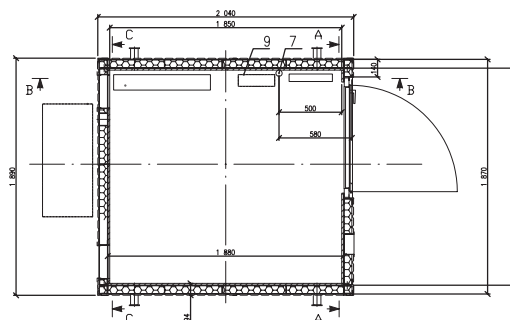
CROSS-SECTION B-B



ANCHORAGE DESIGN



CONTAINER GROUND PLAN



DIMENSIONS OF CONTAINERS		1,7x1,85m
OUTSIDE DIMENSIONS (mm)		
Housing length		2040
Housing width		1860
Housing height		2200
Ridge height		2511
Maximum length (ridge length)		2010
Roof width		1950
WEIGHT (kg)		
Solid		840
Al design		530

Due to continuous innovations TERMS a.s. reserves the right to make changes without any prior notification.